

PRODUCT CODE:-

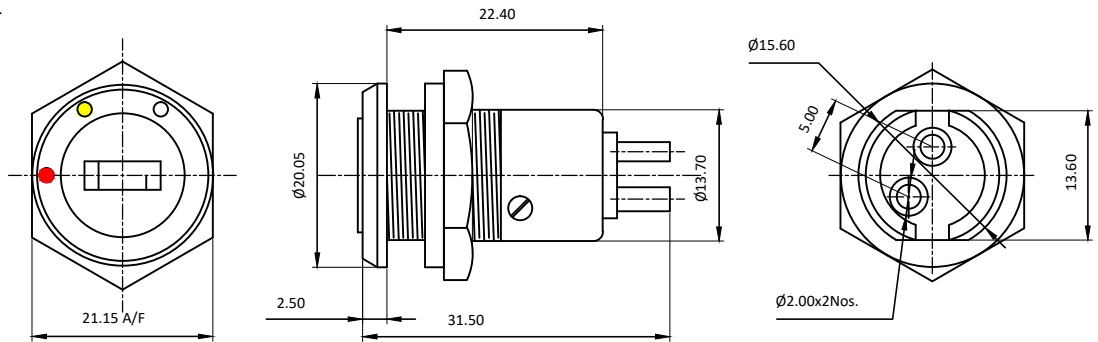
KLS-1 Series

CATEGORY:-

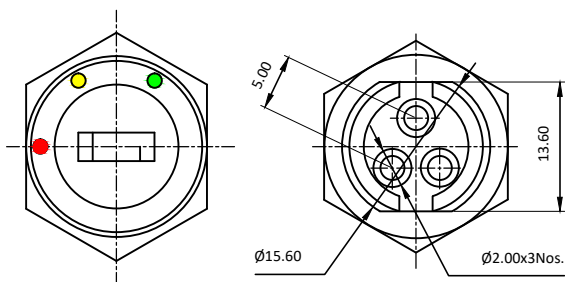
KEY LOCK SWITCH

## BASIC DIMENSIONS :-

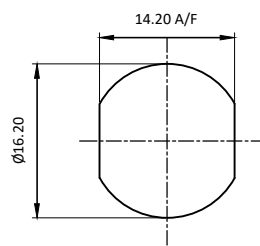
KLS-1/2 :-



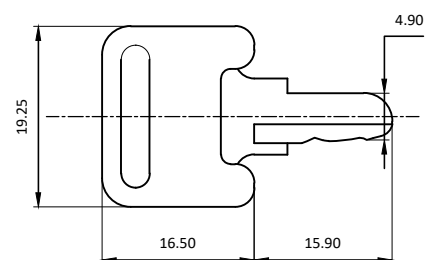
KLS-1/3 :-



PANEL CUTOUT :-



KEY :-



## SPECIFICATION TABLE :-

SR.NO.	PARAMETER		SPECIFICATION
1	Type And Function		Key operated Switch.
2	V/A Rating		12VDC / 25mA,
3	Contact Resistance (Initial)		10 m Ohms. Max.
4	Insulation Resistance at 500 V DC		100 M Ohms Min.
5	H.V.Break Down Test (For 1-Minute)		1.0 KV AC
6	Mounting		Panel With Screw
7	Terminals		Solder-type
8	Electrical Life (min.)		10,000 Cycles Min.
9	Permissible Temp.	(a)With/Without Load	-25°C TO +85°C
		(b)For Soldering	270°C, 5 Sec Max
10	Material	(a)Body	Engineering Thermoplastic.
		(b) Key, Key-lever	Steel, Nickel plated
		(c)Terminals	Brass, Silver plated
		(d) Nut	Polyamide / Brass
11	Reference Standards		IEC-61058-1

## ORDERING CODE

Series

Type

Nut Material

KLS

1/2

Key Removable in 2 positions

Polyamide

M

Brass

Series

Type


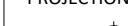
KLS

1/3

Key removable in 3 positions

For Example-

KLS-1/2

							APP	19.12.10	PBM	<div><div>Plot E-4, Kagal Five Star MIDC, Kagal, Kolhapur, MH - 416236, India</div><div>Elcom International Pvt. Ltd.</div><div>www.elcom-in.com</div></div>									
							CHK	19.12.10	GJG										
							DRN	19.12.10	Atish										
REV	IS	WAS		DATE	SIGN	APP.	BY	DATE	SIGN										
UNSP.TOLERANCE				DIMNS. IN	WT(Gm)		SCALE:-		PROJECTION	SHEET	DRAWING NUMBER								
OVER	-	1	10	mm	Max.		NTS.			1 OF 1	P	K	L	S	9	0	0	1	REVISION
UP TO	1	10	-	Moulding, plating details as per Bill of Material Unspecified colour is Black, GF:Glass filled.							0								
±	0.2	0.3	0.5								0								

F:ENG-08.00

Note: Technical specifications are subject to change without prior notice

Copyright © 2019 by Elcom International Pvt.Ltd, India. All rights reserved