

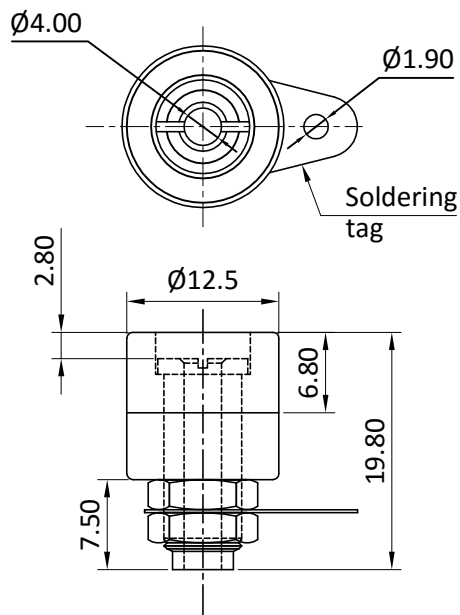
PRODUCT CODE:-

BS-5 Series

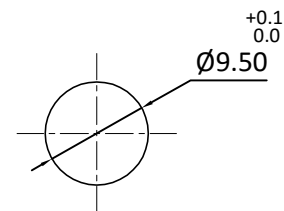
CATEGORY:-

SOCKET

## BASIC DIMENSIONS



## Panel Cutout



## SPECIFICATION TABLE

SR.NO.	PARAMETER		SPECIFICATION	
1	Type		BS-5	BS-5-1
2	Plug size		$\varnothing 4.00$	
3	V/A Rating		10A, 250VAC	
4	Insulation Resistance		100 M ohms Min.	
5	H.V.Break Down Test (For 1-Minute)		2 KVAC	
6	Contact Resistance (Initial)		10 mohms max.	
7	Permissible Temperature	(a) With/Without Load	$-20^{\circ}\text{C}$ to $+85^{\circ}\text{C}$	
		(b) For Soldering	$270^{\circ}\text{C}$ , 5 second max.	
8	Mounting		Panel, Screw-type	
9	Terminals		Solder-type	
10	Material	(a) Body	ABS	
		Colour	As per requirement	
		(b) Contacts, Terminals	Brass, Tin plating	
11	Reference Standard		JSS 52710	
12	Approvals		CE	

## ORDERING CODE

Series

Type

Variety

Color Code

BS

5 Panel mounting, 10 A, split body

Assembled  
(As Per The Drawing)1 Disassembled  
(set of Parts)

03 Black

04 Red

05 Blue


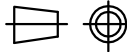
06 Yellow

07 Green

## For Example-

BS-5-03

BS-5-1-07

						APP	16.10.15	GJG	 <div>Plot E-4, Kagal Five Star MIDC, Kagal, Kolhapur, MH - 416236, India</div> <div>Elcom International Pvt. Ltd.</div> <div>www.elcom-in.com</div>											
						CHK	16.10.15	Sagar												
						DRN	16.10.15	Vicky												
REV	IS	WAS	DATE	SIGN	APP.	BY	DATE	SIGN												
UNSP.TOLERANCE				DIMNS. IN	WT(Gm)		SCALE:-		PROJECTION	SHEET	DRAWING NUMBER									
OVER	-	1	10	mm	Max.		NTS.			1 OF 1	P	B	S	0	2	0	0	5	REVISION	
UP TO	1	10	-	Moulding, plating details as per Bill of Material Unspecified colour is Black, GF:Glass filled.																
±	0.2	0.3	0.5																0	

F:ENG-08.00

Note: Technical specifications are subject to change without prior notice

Copyright © 2018 by Elcom International Pvt.Ltd, India. All rights reserved