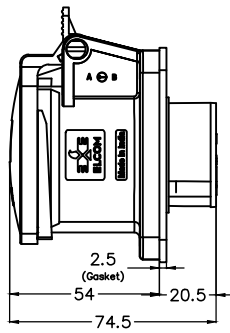
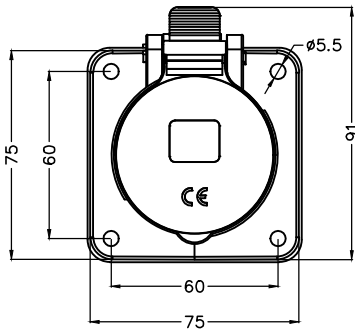
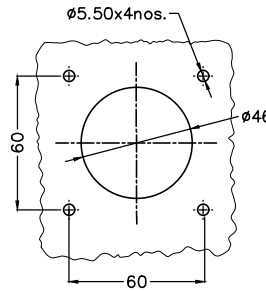


16A Straight Socket - 3Pin_200V_250V_6h_IP44

BASIC DIMENSIONS



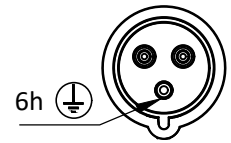
PANEL CUTOUT



PRODUCT OVERVIEW


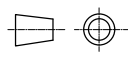
PINS POSITION

- IP44
- High impact & heat resistant Polyamide material
- Color coding as per Voltage
- Terminal with Double Screws, zinc plated
- Glow wire Index: 850° C
- UL-94 V-2 Flame retardant material



PRODUCT SPECIFICATION

SR.NO.	PARAMETER	SPECIFICATION
1	Panel Mount Straight Socket Type	16A, 3 Pin (2P+ E)
2	V/A Rating	16A, 200-250 VAC, 50 - 60Hz
3	Insulation Resistance At 500 V DC	100 M ohms min.
4	H.V.Break Down Test (For 1-Minute)	2 KV AC
5	Terminals	Screw-type
6	Applicable Cable Sizes	1.5 - 2.5 Sq. mm
7	Earth Position	6h
8	Plug Angle	Straight
9	Permissible Temp.	a. With/Without Load -25°C TO +90°C
10	Material	a. Body Polyamide , V2
		b. Terminals Copper Alloy
		c. Terminal screws MS, Zinc Plated
11	Torque	a. Tightening Torque for Screw 0.9 Nm Max.
12	IP Protection type	IP44
13	Reference Standard	IEC 60309-1, IEC 60309-2, UL-1686
14	Compliance Marking	CE, RoHS Complied
15	Weight	168 gm (Approximate)

						PRODUCT :- Industrial Panel Mount Straight Socket			CODE : 1347										
						APP	29.01.2024	GJG	 Plot E-4, Kagal Five Star MIDC, Kagal, Kolhapur, MH - 416236, India Elcom International Pvt. Ltd. www.elcom-in.com										
						CHK	29.01.2024	SRK											
						DRN	29.01.2024	SRK											
REV	IS	WAS	DATE	SIGN	APP	BY	DATE	SIGN											
UNSP.TOLERANCE				DIMNS. IN	WT(Gm)	SCALE:-	PROJECTION	SHEET	DRAWING NUMBER										
OVER	-	1	10	mm	Max.	NTS.		1 OF 1	0	0	0	0	0	1	3	4	7	REVISION	
UP TO	1	10	-																
±	0.3	0.5	1.0																