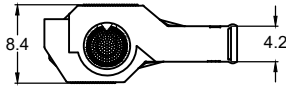
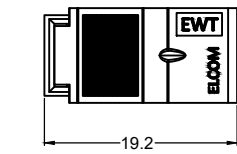
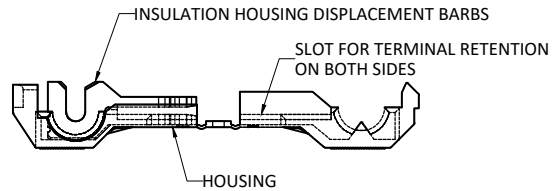
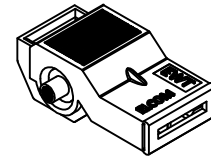
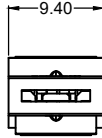


BASIC DIMENSIONS :-

ASSEMBLY ON WIRE



CLOSED POSITION AFTER ASSEMBLY ON WIRE



OPEN POSITION BEFORE ASSEMBLY ON WIRE

SPECIFICATION TABLE:-

Sr.No.	PARAMETER		SPECIFICATIONS
1	Product Category		IDC and Connector.
2	Product		Wire Tap.
3	Voltage Rating (Max.)		600V
4	Durability (Mating Cycles Max.)		25
5	Circuits (Loaded)		1
	Circuits (Max.)		1
6	Permissible Operating Temperature.		-25°C To 105°C
7	H V Test		3.4 kV
8	Insulation Resistance		100 MΩ
9	Material	(a) Plastic Body	Thermoplastic.
		(b) Contacts, Terminals	Copper Alloy, Tin Plating.
10	Flammability		UL 94 V-0.
11	Wire Size		14 AWG, 12 AWG & 10 AWG
12	Maximum recommended connector current	14 AWG	15 AMPS
		12 AWG	20 AMPS
		10 AWG	30 AMPS
13	Housing Color	14 AWG	Blue
		12 AWG	Yellow
		10 AWG	Grey
14	Recommended Wire Ø as per UL 1015	14 AWG	3.50 ±0.10
		12 AWG	4.05 ±0.15
		10 AWG	5.00 ±0.20
15	Compatibility to Mating Part		Firm Press Fit.
16	Reference standards		UL 486A-486B
17	Compliance Marking		
18	Approvals		

						PRODUCT :- IDC WIRE TAP CONNECTOR			CODE : EWT-XX Series		
						APP	31.05.2021	PBM			
						CHK	31.05.2021	GJG			
						DRN	31.05.2021	SURAJ			
REV	IS	WAS	DATE	SIGN	APP.	BY	DATE	SIGN			
UNSP.TOLERANCE		DIMNS. IN mm	WT(Gm) Max.	SCALE:- NTS.	PROJECTION	SHEET	DRAWING NUMBER				
OVER	-						1	10		1 OF 2	P E W T - X X
UP TO	±	0.2	0.3	0.5				RO			
Moulding, plating details as per Bill of Material Unspecified colour is Black, GF:Glass filled.											

F:ENG-08.00
 Note: Technical specifications are subject to change without prior notice
 For Disposal of Product /Packing please refer note available on www.elcom-in.com

ORDERING CODE:-

Sr.No.	ELCOM Part No.	Description
01	EWT-A-01	10 AWG, GREY Housing
02	EWT-B-06	12 AWG, YELLOW Housing
03	EWT-C-05	14 AWG, BLUE Housing

ASSEMBLY INSTRUCTIONS FOR WIRE TAP :-

For use with only stranded copper wire and copper alloy tabs
600V, 105°C 14AWG, 12AWG & 10 AWG wires.

1. Insert the correct size wire properly into the connector.
2. Position the connector into the tongue-and-groove pliers as shown in Fig.1.1 or in dedicated fixture and carefully squeeze until the connector housing latch engages.
3. Recommended pressure to lock the connector is 40psi to 65psi.
4. Applying excess pressure may damage the connector housing.

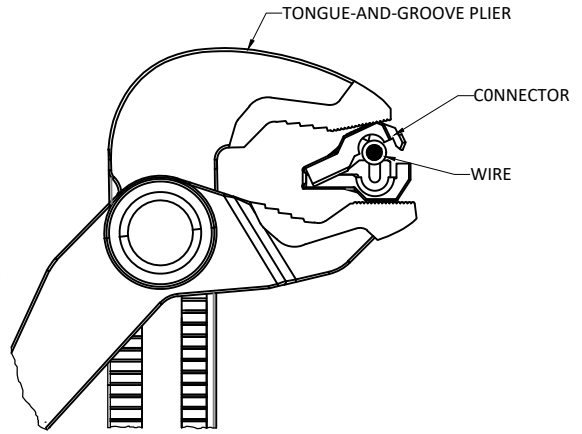

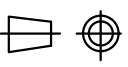


Fig.1.1

						PRODUCT :- IDC WIRE TAP CONNECTOR			CODE : EWT-XX Series		
						APP	31.05.2021	PBM	 Plot E-4, Kagal Five Star MIDC, Kagal, Kolhapur, MH - 416236, India Elcom International Pvt. Ltd. www.elcom-in.com		
						CHK	31.05.2021	GJG			
						DRN	31.05.2021	SURAJ			
REV	IS	WAS	DATE	SIGN	APP.	BY	DATE	SIGN			
UNSP.TOLERANCE				DIMNS. IN	WT(Gm)	SCALE:-	PROJECTION	SHEET	DRAWING NUMBER		
OVER	-	1	10	mm	Max.	NTS.		2 OF 2	P E W T - X X		REVISION
UP TO	1	10	-	Moulding, plating details as per Bill of Material Unspecified colour is Black, GF:Glass filled.					R0		
±	0.2	0.3	0.5								

F:ENG-08.00

Note: Technical specifications are subject to change without prior notice
For Disposal of Product /Packing please refer note available on www.elcom-in.com

Copyright© 2023 by Elcom International Pvt.Ltd, India. All rights reserved